

SMB Coaxial Connectors

SMB Koaxialkontakte

Technical Data

Technische Daten

Mechanical Data

Mechanische Daten

Mechanical Data <i>Mechanische Daten</i>	
Mating force <i>Steckkraft</i>	max. 62.3 N (14 lbs.)
Unmating force <i>Ziehkraft</i>	$8,9 \text{ N} \leq F \leq 62,3 \text{ N}$ (2 lbs. $\leq F \leq$ 14 lbs.)
Recommended temperature range <i>Empfohlener Temperaturbereich</i>	$-65 \text{ }^\circ\text{C} \leq \vartheta \leq 165 \text{ }^\circ\text{C}$ ($-85 \text{ }^\circ\text{F} \leq \vartheta \leq 329 \text{ }^\circ\text{F}$)
Mating cycles <i>Steckzyklen</i>	≥ 500

Electrical Data

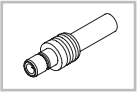
Elektrische Daten

Electrical Data <i>Elektrische Daten</i>	
Characteristic impedance <i>Wellenwiderstand</i>	50 Ω / 75 Ω
Frequency range <i>Frequenzbereich</i>	0 - 4 GHz
Insulation resistance <i>Isolationswiderstand</i>	$\geq 1000 \text{ M}\Omega$
Contact resistance inner conductor <i>Durchgangswiderstand Innenleiter</i>	$\leq 6 \text{ m}\Omega$
Contact resistance outer conductor <i>Durchgangswiderstand Außenleiter</i>	$\leq 1 \text{ m}\Omega$
Dielectric Withstanding Voltage (DWV) at sea level <i>Prüfspannung (DWV) auf Meereshöhe</i>	$\geq 1000 \text{ VRSM}$

Materials and Platings

Materialien und Oberflächen

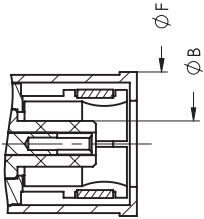
Materials and Platings <i>Materialien und Oberflächen</i>	
Body material <i>Kontaktmaterial</i>	Brass <i>Messing</i>
Material center conductor <i>Material Innenleiter</i>	CuBe / Brass <i>CuBe / Messing</i>
Insulator <i>Isolator</i>	Teflon <i>Teflon</i>
Crimp ferrule <i>Crimphülse</i>	Cu alloy <i>Cu Legierung</i>
Lockwasher <i>Sicherungsscheibe</i>	CuBe <i>CuBe</i>
Center contact plating <i>Oberfläche Innenleiter</i>	Au over Ni <i>Au über Ni</i>



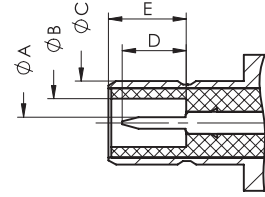
SMB Coaxial Connectors, Mating Area Dimensions

SMB Koaxialkontakte, Abmessungen Steckbereich

Plug
Stift



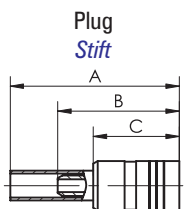
Jack
Buchse



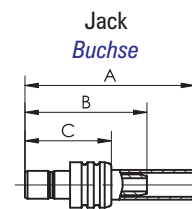
	Plug / <i>Stift</i>		Jack / <i>Buchse</i>	
	min.	max.	min.	max.
A	—	—	0,48 (0.019)	0,53 (0.021)
B	—	2,06 (0.081)	2,08 (0.082)	—
C	—	—	3,66 (0.144)	3,71 (0.146)
D	—	—	—	2,97 (0.117)
E	—	—	3,35 (0.132)	3,48 (0.137)
F	—	6,60 (0.260)	—	—

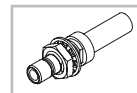
Dimensions Straight Cable Termination (SMB)

Abmessungen gerader Kabelanschluss (SMB)



FCT Part Number <i>FCT Teilenummer</i>	A	B	C	Characteristic Impedance <i>Wellenwiderstand</i>	Suitable cable <i>Verwendbares Kabel</i>	
A26J1NA-201-10	19,1 (0.750)	17,8 (0.700)	11,8 (0.463)	50 Ohm	RG316, 188, 174	
A26J1NA-205-10	19,1 (0.750)	17,8 (0.700)	11,8 (0.463)		RG316, 188, 174 D.S.	
A26P1NA-201-10	19,1 (0.750)	17,8 (0.700)	10,8 (0.425)		RG316, 188, 174	
A26P1NA-205-10	19,1 (0.750)	17,8 (0.700)	10,8 (0.425)		RG316, 188, 174	
A29J1NA-201-10	19,1 (0.750)	17,8 (0.700)	11,8 (0.463)		MINI / 75 Ohm	RG179, 187
A29J1NA-205-10	19,1 (0.750)	17,8 (0.700)	11,8 (0.463)			RG179, 187 D.S.
A29P1NA-201-10	19,1 (0.750)	17,8 (0.700)	10,8 (0.425)	RG179, 187		
A29P1NA-205-10	19,1 (0.750)	17,8 (0.700)	10,8 (0.425)	RG179, 187 D.S.		

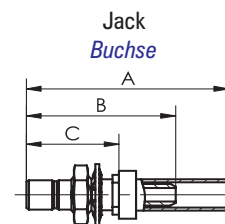




Dimensions Straight Cable Termination, Bulkhead (SMB)

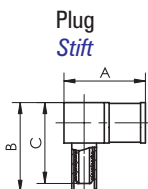
Abmessungen gerader Kabelanschluss, Gehäusedurchführung (SMB)

FCT Part Number FCT Teilenummer	A	B	C	Characteristic Impedance Wellenwiderstand	Suitable Cable Verwendbares Kabel
A26J1BK-201-10	23,6 (0.928)	22,2 (0.875)	10,4 (0.410)	50 Ohm	RG316, 188, 174
A26J1BK-205-10	23,6 (0.928)	22,2 (0.875)	10,4 (0.410)		RG316, 188, 174, D.S.
A29J1BK-201-10	23,6 (0.928)	22,2 (0.875)	10,4 (0.410)	MINI / 75 Ohm	RG179, 187
A29J1BK-205-10	23,6 (0.928)	22,2 (0.875)	10,4 (0.410)		RG179, 187 D.S.



Dimensions Right Angled Cable Termination (SMB)

Abmessungen abgewinkelter Kabelanschluss (SMB)



FCT Part Number FCT Teilenummer	A	B	C	Characteristic Impedance Wellenwiderstand	Suitable Cable Verwendbares Kabel
A26P2NA-201-10	12,8 (0.505)	14,0 (0.550)	12,7 (0.500)	50 Ohm	RG316, 188, 174
A26P2NA-205-10	12,8 (0.505)	14,0 (0.550)	12,7 (0.500)		RG316, 188, 174 D.S.
A26P2NA-206-10	12,8 (0.505)	14,0 (0.550)	12,7 (0.500)		RG178, 196
A29P2NA-201-10	12,8 (0.505)	14,0 (0.550)	12,7 (0.500)	MINI / 75 Ohm	RG179, 187
A29P2NA-205-10	12,8 (0.505)	14,0 (0.550)	12,7 (0.500)		RG179, 187 D.S.

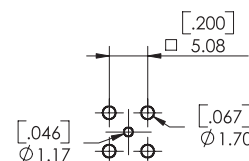
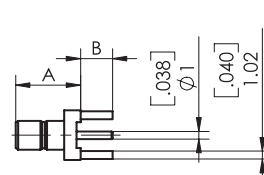
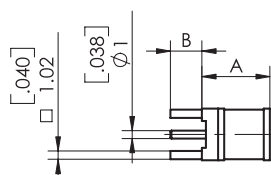
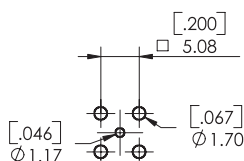
Dimensions Straight PCB Termination (SMB)

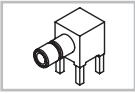
Abmessungen gerader Leiterplattenanschluss (SMB)

Plug
Stift

FCT Part Number FCT Teilenummer	A	B	Characteristic Impedance Wellenwiderstand
A26P1PC-000-10	8,5 (0.335)	3,9 (0.155)	50 Ohm
A26P1SF-000-10	8,5 (0.335)	—	
A26J1PC-000-10	8,0 (0.315)	3,9 (0.155)	MINI / 75 Ohm
A26J1SF-000-10	8,0 (0.315)	—	
A29P1PC-000-10	8,5 (0.335)	3,9 (0.155)	MINI / 75 Ohm
A29P1SF-000-10	8,5 (0.335)	—	
A29J1PC-000-10	8,0 (0.315)	3,9 (0.155)	
A29J1SF-000-10	8,0 (0.315)	—	

Jack
Buchse

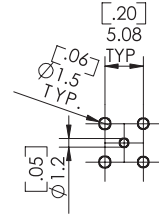
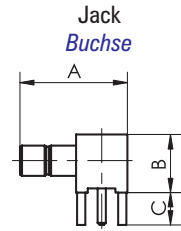




Dimensions Right Angled PCB Termination (SMB)

Abmessungen abgewinkelter Leiterplattenanschluss (SMB)

FCT Part Number FCT Teilenummer	A	B	C	Characteristic Impedance Wellenwiderstand
A26J2PC-000-10	13,3 (0.524)	7,1 (0.278)	3,9 (0.155)	50 Ohm
A29J2PC-000-10	13,3 (0.524)	7,1 (0.278)	3,9 (0.155)	MINI / 75 Ohm



Product Line (SMB)

Lieferübersicht (SMB)

FCT Part Number FCT Teilenummer	Characteristic Impedance Wellenwiderstand	Material Material	Inner conductor Innenleiter	Suitable cable Verwendbares Kabel	Mounting Befestigung	
Straight Cable Termination / Gerader Kabelanschluss						
A26P1NA-201-10	50 Ohm	Brass Messing	Plug Stift	RG316, 188, 174		
A26P1NA-205-10			Stift	RG316, 188, 174 D.S.		
A26J1BK-201-10			Jack Buchse	RG316, 188, 174	Bulkhead / Gehäusedurchführung	
A26J1BK-205-10			Buchse	RG316, 188, 174 D.S.	Bulkhead / Gehäusedurchführung	
A26J1NA-201-10				RG316, 188, 174		
A26J1NA-205-10			RG316, 188, 174 D.S.			
A29P1NA-201-10	MINI / 75 Ohm		Plug Stift	RG179, 187		
A29P1NA-205-10			Stift	RG179, 187 D.S.		
A29J1BK-201-10			Jack Buchse	RG179, 187	Bulkhead / Gehäusedurchführung	
A29J1BK-205-10			Buchse	RG179, 187 D.S.	Bulkhead / Gehäusedurchführung	
A29J1NA-201-10			RG179, 187			
A29J1NA-205-10		RG179, 187 D.S.				
Right Angled Cable Termination / Abgewinkelter Kabelanschluss						
A26P2NA-201-10	50 Ohm	Brass Messing	Plug Stift	RG316, 188, 174		
A26P2NA-205-10			Stift	RG316, 188, 174 D.S.		
A26P2NA-206-10	MINI / 75 Ohm			RG178, 196		
A29P2NA-201-10				RG179, 187		
A29P2NA-205-10				RG179, 187 D.S.		
Straight PCB Termination / Gerader Leiterplattenanschluss						
A26P1PC-000-10	50 Ohm	Brass Messing	Plug Stift		PCB Mount / Leiterplatte	
A26P1SF-000-10			Stift		Surface Mount / Oberflächenmontage (SMT)	
A26J1PC-000-10			Jack Buchse		PCB Mount / Leiterplatte	
A26J1SF-000-10			Buchse		Surface Mount / Oberflächenmontage (SMT)	
A29P1PC-000-10			MINI / 75 Ohm	Plug Stift		PCB Mount / Leiterplatte
A29P1SF-000-10	Stift				Surface Mount / Oberflächenmontage (SMT)	
A29J1PC-000-10	Jack Buchse				PCB Mount / Leiterplatte	
A29J1SF-000-10	Buchse				Surface Mount / Oberflächenmontage (SMT)	
Right Angled PCB Termination / Abgewinkelter Leiterplattenanschluss						
A26J2PC-000-10	50 Ohm		Brass	Jack		PCB Mount / Leiterplatte
A29J2PC-000-10	MINI / 75 Ohm	Messing	Buchse		PCB Mount / Leiterplatte	