

MMCX Microminiature Coaxial Connectors

MMCX Mikrominiaturkoaxialkontakte

Technical Data

Technische Daten

Mechanical Data

Mechanische Daten

Mechanical Data <i>Mechanische Daten</i>	
Mating force <i>Steckkraft</i>	max. 15.2 N (3.4 lbs.)
Unmating force <i>Ziehkraft</i>	min. 6.2 N (1.4 lbs.)
Recommended temperature range <i>Empfohlener Temperaturbereich</i>	$-65\text{ °C} \leq \vartheta \leq 165\text{ °C}$ ($-85\text{ °F} \leq \vartheta \leq 329\text{ °F}$)
Mating cycles <i>Steckzyklen</i>	≥ 500

Electrical Data

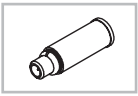
Elektrische Daten

Electrical Data <i>Elektrische Daten</i>	
Characteristic impedance <i>Wellenwiderstand</i>	50 Ω
Frequency range <i>Frequenzbereich</i>	0 - 6 GHz
Insulation resistance <i>Isolationswiderstand</i>	$\geq 5000\text{ M}\Omega$
Contact resistance inner conductor <i>Durchgangswiderstand Innenleiter</i>	$\leq 5\text{ m}\Omega$
Contact resistance outer conductor <i>Durchgangswiderstand Außenleiter</i>	$\leq 3\text{ m}\Omega$
Dielectric Withstanding Voltage (DWV) at sea level <i>Prüfspannung (DWV) auf Meereshöhe</i>	$\geq 500\text{ VRSM}$

Materials and Platings

Materialien und Oberflächen

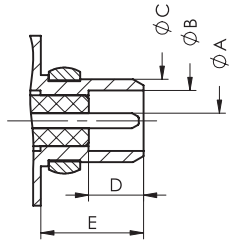
Materials and platings <i>Materialien und Oberflächen</i>	
Body material <i>Kontaktmaterial</i>	Brass <i>Messing</i>
Material center conductor <i>Material Innenleiter</i>	CuBe / Brass <i>CuBe / Messing</i>
Insulator <i>Isolator</i>	Teflon <i>Teflon</i>
Crimp ferrule <i>Crimphülse</i>	Cu alloy <i>Cu Legierung</i>
Center contact plating <i>Oberfläche Innenleiter</i>	Au over Ni <i>Au über Ni</i>



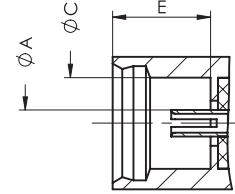
MMCX Coaxial Connectors, Mating Area Dimensions

MMCX Koaxialkontakte, Abmessungen Steckbereich

Plug
Stift



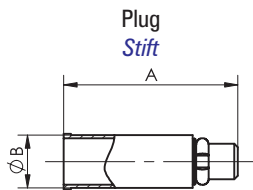
Jack
Buchse



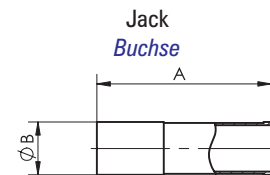
	Plug / <i>Stift</i>		Jack / <i>Buchse</i>	
	min.	max.	min.	max.
A	0,38 (0.015)	0,43 (0.017)	0,70 (0.028) nom.	
B	1,58 (0.062)	1,62 (0.064)	—	—
C	2,36 (0.093)	2,39 (0.094)	2,41 (0.095)	2,45 (0.096)
D	1,45 (0.057)	—	—	—
E	2,36 (0.093)	—	2,61 (0.103)	2,67 (0.105)

Dimensions Straight Cable Termination, Semi-rigid (MMCX)

Abmessungen gerader Kabelanschluss, semi-rigid (MMCX)

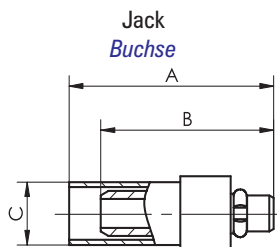


FCT Part Number <i>FCT Teilenummer</i>	A	B	Characteristic Impedance <i>Wellenwiderstand</i>	Suitable Cable <i>Verwendbares Kabel</i>
A22P1NA-103-10	11,5 (0.453)	3,5 (0.138)	50 Ohm	.086 Semi-rigid
A22P1NA-111-10	11,5 (0.453)	3,5 (0.138)		.047 Semi-rigid
A22J1NA-103-10	11,5 (0.453)	3,5 (0.138)		.086 Semi-rigid
A22J1NA-111-10	11,5 (0.453)	3,5 (0.138)		.047 Semi-rigid

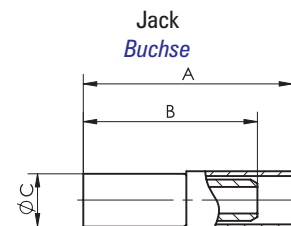


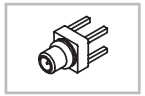
Dimensions Straight Cable Termination (MMCX)

Abmessungen gerader Kabelanschluss (MMCX)



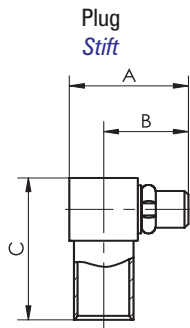
FCT Part Number <i>FCT Teilenummer</i>	A	B	C	Characteristic Impedance <i>Wellenwiderstand</i>	Suitable Cable <i>Verwendbares Kabel</i>
A22P1NA-201-10	12,9 (0.508)	10,9 (0.429)	4,5 (0.177)	50 Ohm	RG316, 188, 174
A22P1NA-205-10	12,9 (0.508)	10,9 (0.429)	4,5 (0.177)		RG316, 188, 174 D.S.
A22P1NA-206-10	12,9 (0.508)	10,9 (0.429)	4,5 (0.177)		RG178, 196
A22J1NA-201-10	16,0 (0.629)	13,7 (0.539)	3,5 (0.138)		RG316, 188, 174
A22J1NA-205-10	16,0 (0.629)	13,7 (0.539)	3,5 (0.138)		RG316, 188, 174 D.S.
A22J1NA-206-10	16,0 (0.629)	13,7 (0.539)	3,5 (0.138)		RG178, 196





Dimensions Right Angled Cable Termination, Semi-rigid (MMCX)

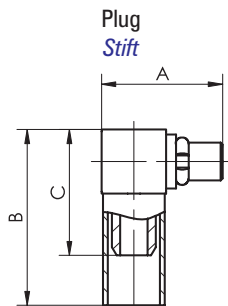
Abmessungen abgewinkelter Kabelanschluss, semi-rigid (MMCX)



FCT Part Number FCT Teilenummer	A	B	C	Characteristic Impedance Wellenwiderstand	Suitable Cable Verwendbares Kabel
A22P2NA-103-10	7,0 (0.276)	5,3 (0.209)	9,0 (0.354)	50 Ohm	.086 Semi-rigid
A22P2NA-111-10	7,0 (0.276)	5,3 (0.209)	9,0 (0.354)		.047 Semi-rigid

Dimensions Right Angled Cable Termination (MMCX)

Abmessungen abgewinkelter Kabelanschluss (MMCX)



FCT Part Number FCT Teilenummer	A	B	C	Characteristic Impedance Wellenwiderstand	Suitable Cable Verwendbares Kabel
A22P2NA-201-10	7,0 (0.276)	11,0 (0.434)	7,9 (0.311)	50 Ohm	RG316, 188, 174
A22P2NA-205-10	7,0 (0.276)	11,0 (0.434)	7,9 (0.311)		RG316, 188, 174 D.S.
A22P2NA-206-10	7,0 (0.276)	11,0 (0.434)	7,9 (0.311)		RG178, 196

Dimensions Straight PCB Termination (MMCX)

Abmessungen gerader Leiterplattenanschluss (MMCX)

Plug
Stift

FCT Part Number FCT Teilenummer	A	B	Characteristic Impedance Wellenwiderstand	Material Material
A22P1PC-000-10	7,5 (0.295)	4,5 (0.177)	50 Ohm	Brass
A22J1PC-000-10	7,5 (0.295)	4,5 (0.177)		Messing

Jack
Buchse

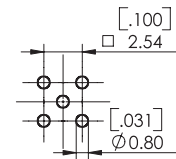
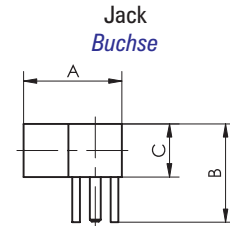




Dimensions Right Angled PCB Termination (MMCX)

Abmessungen abgewinkelter Leiterplattenanschluss (MMCX)

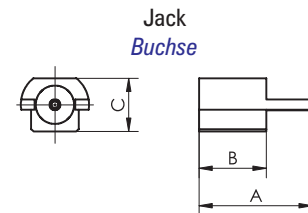
FCT Part Number <i>FCT Teilenummer</i>	A	B	C	Characteristic Impedance <i>Wellenwiderstand</i>	Material <i>Material</i>
A22J2PC-000-10	6,5 (0.256)	6,8 (0.268)	3,8 (0.150)	50 Ohm	Brass <i>Messing</i>



Dimensions Straight Edge Mounted (MMCX)

Abmessungen Leiterplatten Kantenmontage, gerade (MMCX)

FCT Part Number <i>FCT Teilenummer</i>	A	B	C	Characteristic Impedance <i>Wellenwiderstand</i>	Material <i>Material</i>
A22J1EG-000-10	7,5 (0.295)	4,5 (0.175)	3,5 (0.138)	50 Ohm	Brass <i>Messing</i>



Product Line (MMCX)

Lieferübersicht (MMCX)

FCT Part Number <i>FCT Teilenummer</i>	Characteristic Impedance <i>Wellenwiderstand</i>	Material <i>Material</i>	Inner Conductor <i>Innenleiter</i>	Suitable Cable <i>Verwendbares Kabel</i>	Mounting <i>Befestigung</i>
Straight Cable Termination / Gerader Kabelanschluss					
A22P1NA-103-10	50 Ohm	Brass <i>Messing</i>	Plug <i>Stift</i>	.086 Semi-rigid	
A22P1NA-111-10				.047 Semi-rigid	
A22P1NA-201-10				RG316, 188, 174	
A22P1NA-205-10				RG316, 188, 174 D.S.	
A22P1NA-206-10				RG178, 196	
A22J1NA-103-10			Jack <i>Buchse</i>	.086 Semi-rigid	
A22J1NA-111-10				.047 Semi-rigid	
A22J1NA-201-10				RG316, 188, 174	
A22J1NA-205-10				RG316, 188, 174 D.S.	
A22J1NA-206-10				RG178, 196	
Right Angled Cable Termination / Abgewinkelter Kabelanschluss					
A22P2NA-103-10	50 Ohm	Brass <i>Messing</i>	Plug <i>Stift</i>	.086 Semi-rigid	
A22P2NA-111-10				.047 Semi-rigid	
A22P2NA-201-10				RG316, 188, 174	
A22P2NA-205-10				RG316, 188, 174 D.S.	
A22P2NA-206-10				RG178, 196	
Straight PCB Termination / Gerader Leiterplattenanschluss					
A22P1PC-000-10	50 Ohm	Brass <i>Messing</i>	Plug <i>Stift</i>		PCB / Leiterplatte
A22J1PC-000-10			Jack <i>Buchse</i>		PCB / Leiterplatte
Right Angled PCB Termination / Abgewinkelter Kabelanschluss					
A22J2PC-000-10	50 Ohm	Brass <i>Messing</i>	Jack <i>Buchse</i>		PCB / Leiterplatte
Straight Edge Mounted / Leiterplatten Kantenmontage, gerade					
A22J1EG-000-10	50 Ohm	Brass <i>Messing</i>	Jack <i>Buchse</i>		PCB / Leiterplatte